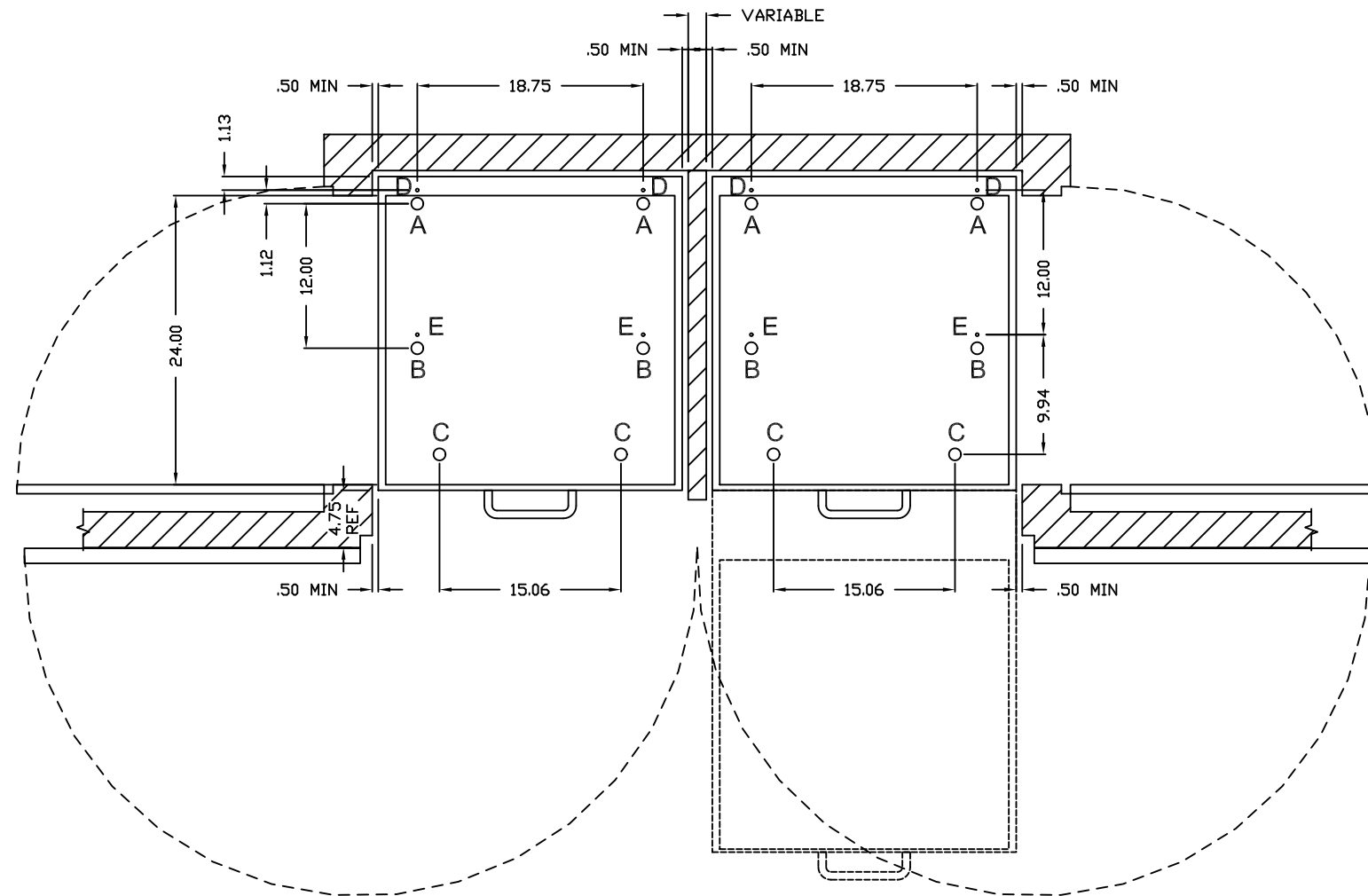


## ENCLOSURE CONSTRUCTION GUIDELINES

NOTES:

- 1.) CABINET/CLOSET AND MOUNTING SURFACE BY OTHERS.
- 2.) LOCAL FIRE CODES MAY APPLY. THE RESPONSIBILITY TO ENSURE APPLICABLE CODES HAVE BEEN MET IS THAT OF OTHERS.
- 3.) DOORS, WALLS, AND WALL THICKNESSES SHOWN ARE FOR ILLUSTRATIVE PURPOSES ONLY. ACTUAL DIMENSIONS TO BE FINALIZED BY OTHERS.
- 4.) DIMENSIONS SHOWN ARE TO PROVIDE FINISHED OPENING SIZES ONLY AND INCLUDE RECOMMENDED MINIMUM CLEARANCES.  
(DIMENSIONS SUBJECT TO CHANGE WITHOUT NOTICE.)

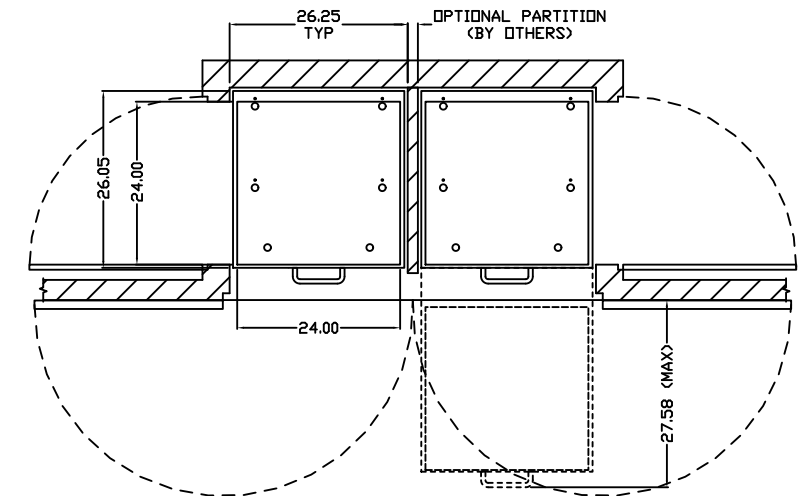


ANCHORING DETAIL  
SCALE 2:1

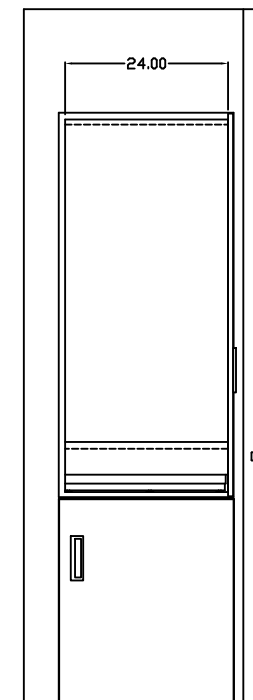
### FORCES AT BOLT POINTS & FOOT POINTS

SYSTEM CONFIG	CARRIAGE WIDTH	CARRIAGE LENGTH	"WORST CASE" FORCE REQUIREMENTS				
			LEVELER 'A' SUPPORT	LEVELER 'B' SUPPORT	LEVELER 'C' SUPPORT	ANCHOR 'D' (PULL OUT)	ANCHOR 'E' (PULL OUT)
DUAL ENTRY DUAL CARR	24"	24"	400#	74#	900#	350#	650#
	24"	30"	400	74	900	350	650
	24"	36"	400	74	900	350	650

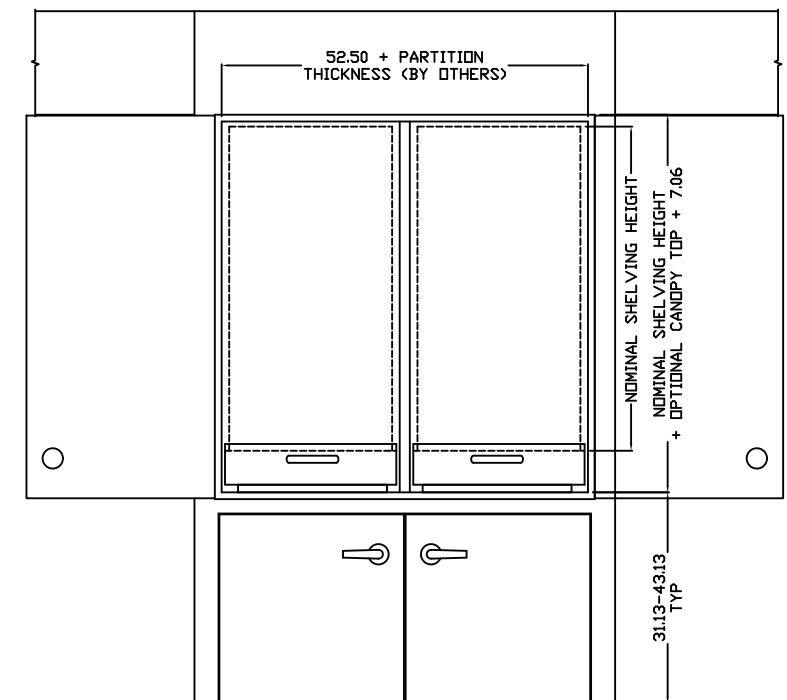
\*FORCES CALCULATED PER BOLT  
(SHELF WEIGHT = 15lb/ft LENGTH-WIDTH, UNIFORMLY DISTRIBUTED)  
ANCHORS TO BE Ø 5/16"-18 GRADE 5 THREADED BOLTS  
DO NOT USE WOOD AS A MOUNTING SUBSTRATE TO AVOID LONG TERM INDENTING



SPLIT DOUBLE  
2 - 24 x 24 BASE UNIT CARRIAGES



FINISHED OPENING



TOLERANCES UNLESS OTHERWISE SPECIFIED

.XX ± .01
.XXX ± .005
X° ± 1°



TITLE	CoreSTOR™ PATIENT SERVER SPLIT DOUBLE 24 X 24 GUIDE
-------	--

RESERVED. (by	DWN BY

DATE	1/26/09
------	---------

SIZE	FSCM NO.
D	58928

DWG NO.  
CoreSTOR SD 24x24

SCALE	NTS	SHEET	OF
-------	-----	-------	----